



TRANSFORMADOR DE CORRIENTE / CURRENT TRANSFORMER

SERIE / SERIES "TCV-1" ANSI IEEE C57.13

CARACTERÍSTICAS / FEATURES

APLICACIONES PARA PROTECCIÓN Y MEDICIÓN DE CORRIENTES / FOR RELAYING AND CURRENT METERING APPLICATIONS
TIPO DE AISLAMIENTO/ INSULATION TYPE

ABS COLOR NEGRO UL.No.E121562.
ABS BLACK COLOUR, UL FILE: E121562

NORMA DE APLICACIÓN / STANDARD
CLASE NOMINAL DE AISLAMIENTO / RATED SYSTEM VOLTAGE
FRECUENCIA / FREQUENCY
NIVEL BASICO DE IMPULSO/ B.I.L.
SERVICIO / SERVICE

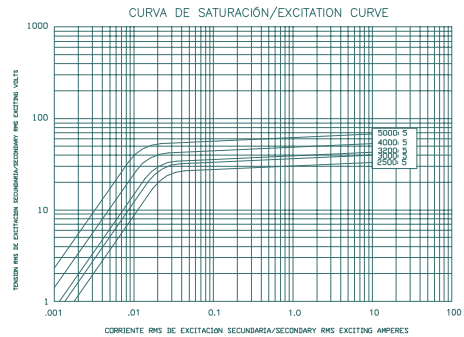
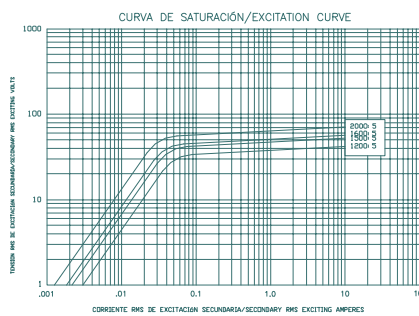
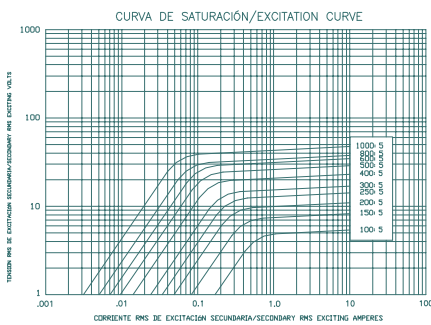
ANSI IEEE C57.13
0.6 kV
60Hz
10kV
5A



CARACTERÍSTICAS TÉCNICAS / TECHNICAL FEATURES

NÚMERO DE CATÁLOGO ANTERIOR / PREVIOUS CATALOG NUMBER	PROTECCIÓN / RELAY CLASS	RELACIÓN / RATIO	METERING CLASS					FTC / TRF @ 30°C AMB.	RESISTENCIA SEC. / RESISTANCE @75°C (OHMS)
			B0.1	B0.2	B0.5	B0.9	B1.8		
			TCV10-100S0	---	100:5 A	2.4	---		
TCV10-150S0	C-5	150:5 A	1.2	2.4	---	---	---	1.33	0.017
TCV10-200S0	C-10	200:5 A	1.2	1.2	---	---	---	1.33	0.023
TCV10-250S0	C-10	250:5 A	0.6	1.2	2.4	---	---	1.33	0.038
TCV10-300S0	C-10	300:5 A	0.6	0.6	1.2	---	---	1.33	0.045
TCV10-400S0	C-20	400:5 A	0.6	0.6	1.2	2.4	---	1.33	0.095
TCV10-500S0	C-20	500:5 A	0.3	0.3	0.6	1.2	2.4	1.33	0.135
TCV10-600S0	C-30	600:5 A	0.3	0.3	0.6	1.2	1.2	1.33	0.163
TCV10-800S0	C-30	800:5 A	0.3	0.3	0.3	0.6	0.6	1.33	0.217
TCV10-1000S0	C-40	1000:5 A	0.3	0.3	0.3	0.6	0.6	1.33	0.270
TCV10-1200S0	C-30	1200:5 A	0.3	0.3	0.3	0.3	0.6	1.33	0.326
TCV10-1500S0	C-40	1500:5 A	0.3	0.3	0.3	0.3	0.6	1.33	0.407
TCV10-1600S0	C-40	1600:5 A	0.3	0.3	0.3	0.3	0.6	1.33	0.314
TCV10-2000S0	C-50	2000:5 A	0.3	0.3	0.3	0.3	0.3	1.33	0.392
TCV10-2500S0	C-30	2500:5 A	0.3	0.3	0.3	0.3	0.3	1.33	0.490
TCV10-3000S0	C-30	3000:5 A	0.3	0.3	0.3	0.3	0.3	1.33	0.628
TCV10-3200S0	C-30	3200:5 A	0.3	0.3	0.3	0.3	0.3	1.33	0.670
TCV10-4000S0	C-40	4000:5 A	0.3	0.3	0.3	0.3	0.3	1.33	0.837
TCV10-5000S0	C-50	5000:5 A	0.3	0.3	0.3	0.3	0.3	1.33	0.981

CURVAS DE SATURACIÓN



NOTA: ESTAS DIMENSIONES PUEDEN TENER VARIACIONES DE ± 2mm.

NOTE: THESE DIMENSIONS COULD HAVE VARIATIONS OF ± 2mm.

EQUIPOS ELECTRICOS CORE SE RESERVA EL DERECHO DE MODIFICAR ESTA INFORMACION SIN PREVIO AVISO.

EQUIPOS ELECTRICOS CORE RESERVES THE RIGHT OF MODIFYING THIS INFORMATION WITHOUT A PREVIOUS NOTIFICATION

JULIO 2024 REV. 8.

PIT-01

HOJA 1 DE 2 / SHEET 1 OF 2



TRANSFORMADOR DE CORRIENTE / CURRENT TRANSFORMER

SERIE / SERIES "TCV-1" ANSI IEEE C57.13

DIMENSIONES [PUL. (mm)] / DIMENSIONS [INCHES (mm)]

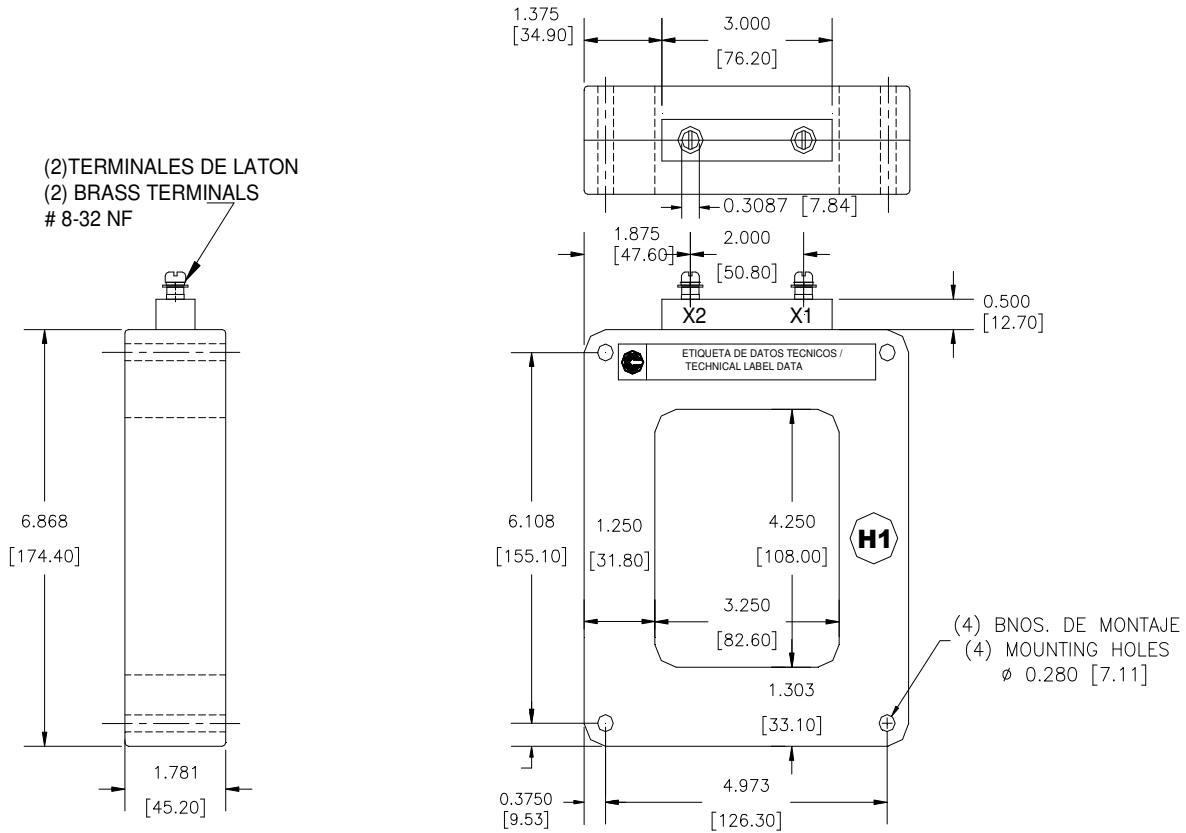
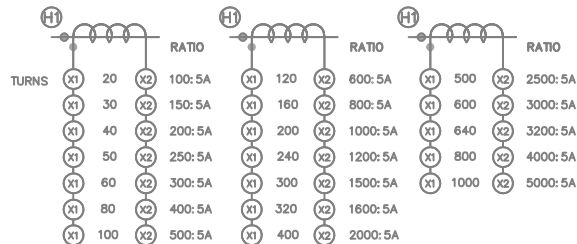


DIAGRAMA DE CONEXIÓN ELÉCTRICA / ELECTRIC CONECTION DIAGRAM

CONEXIONES DE RELACIÓN-SENCILLA / SINGLE-RATIO CONECTIONS



NOTA: ESTAS DIMENSIONES PUEDEN TENER VARIACIONES DE ± 2mm.
NOTE: THESE DIMENSIONS COULD HAVE VARIATIONS OF ± 2mm.
EQUIPOS ELECTRICOS CORE SE RESERVA EL DERECHO DE MODIFICAR ESTA INFORMACION SIN PREVIO AVISO.
EQUIPOS ELECTRICOS CORE RESERVES THE RIGHT OF MODIFYING THIS INFORMACION WITHOUT A PREVIOUS NOTIFICATION
JULIO 2024 REV. 8. PIT-01